



**wut dis?**



## DATA HARMS & DATA HAZARDS

Rowenna Fielding  
Director

Miss IG Geek Ltd  
(starring Timmy the Cat)

y tho

# Data Harms



## SIGNIFICANT FOR....

- fairness
- proportionality
- impact to rights & freedoms of data subjects
- balance of interests



like it

# INDIVIDUAL HARMS

Human, civil, consumer,  
labour, contract, etc



Physical, emotional,  
reputational,  
financial, property



Burden of proof,  
access to resources  
harder



Discrimination,  
injustice,  
disadvantage,  
exploitation



Freedom of speech,  
association,  
expression,  
conscience, etc

dislike



**Uber Employees Used Data to Stalk Celebrities, Exes**

**'They Were Spying On Us': Amazon, Walmart, Use Surveillance Technology to Bust Unions**

**Revealed: how gambling industry targets poor people and ex-gamblers**

**Surveillance Chills Speech—As New Studies Show—And Free Association Suffers**

**Warwick Business School scraps 'discriminatory and ableist' exam surveillance software**

## GROUP HARMS



### SYSTEMIC INJUSTICE

Particular groups of people are treated disproportionately less well than others



### DISCRIMINATION

Social prejudice creates structural bias against certain groups of people



### EXCLUSION

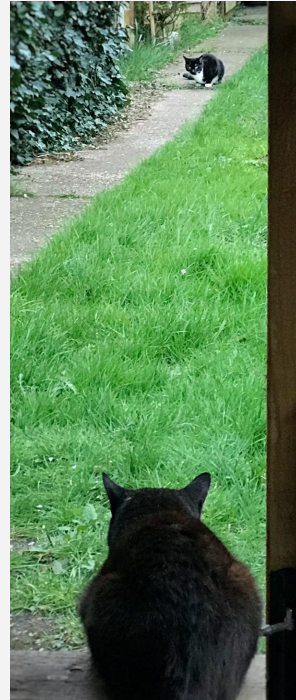
The needs of minorities and marginalised people are neglected in design and decision-making processes



### ASSOCIATION

People are judged by the inherent traits they share with other group members, not as individuals

off my lawn



# How Opaque Personality Tests Can Stop Disabled People from Getting Hired

*Facebook Engages in Housing Discrimination With Its Ad Practices, U.S. Says*

92% Of Top Parental Control Apps Wrongly Block LGBTQ And Sex-Ed Sites

**How Surveillance Harms Low-Income People and Workers**

**The Apple Card Didn't 'See' Gender—and That's the Problem**

The way its algorithm determines credit lines makes the risk of bias more acute.

## CHALLENGE



## STOCHASTIC PROCESS

Outcomes are foreseeable  
(what harms will result)

BUT

not predictable  
(not when, where, to whom, how much)



## RETHINKING 'RISK'

### WHERE TO LOOK

...when both likelihood and impact are  
**unquantifiable\*** at either group or  
individual levels

(\*can't be measured by counting things)



gotcha

# HAZARD MODEL

01

## CONDITIONS

Environmental factors which provide vectors for data harms to be caused

02

## MATERIALS

Unsafety factors in the nature of data itself, and the tools used to process it

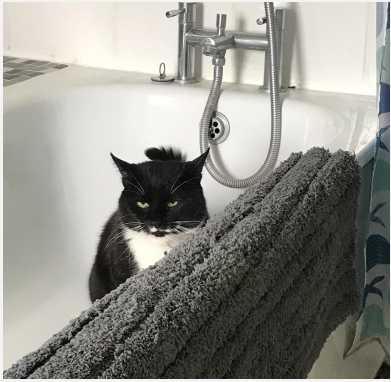
03

## OPERATIONS

Processing activities and purposes which are inherently dangerous



yikes



## CONDITIONS

### IMMATURITY

Organisation's data protection governance and infrastructure are weak, unreliable, arbitrary

### POWER IMBALANCE

The data subject's choices and agency are limited compared to the power of the Controller(s)

### COMPLEXITY

Long/complex /international supply chains involved

### BIZ MODEL

Extractive and/or exploitative practices are fundamental to the business model or industry

# **I WANT YOU BACK: GETTING MY PERSONAL DATA FROM AMAZON WAS WEEKS OF CONFUSION AND TEDIUM**

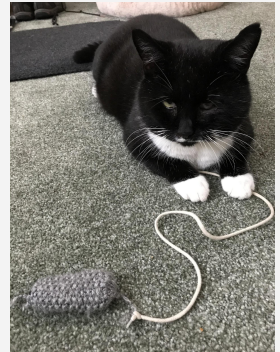
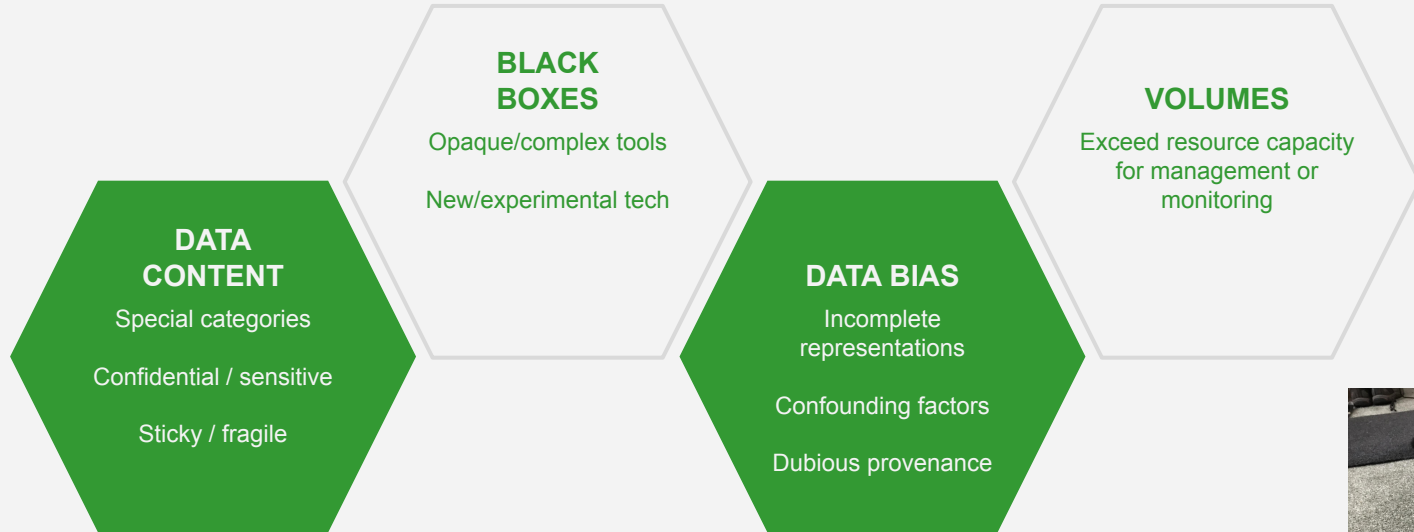
Former Uber security chief convicted of covering up data breach

**The human cost of Australia's illegal 'robo' hunt for welfare cheats**

**'Grave concerns over the validity of EU status digital system' after Home Office benefits error**

Out-group animosity drives engagement on social media

# MATERIALS



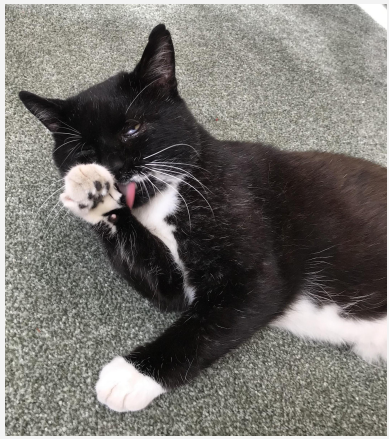
# Technology is Enabling Surveillance, Inequality During the Pandemic

**Report finds COVID  
patients with learning  
disabilities given blanket  
DNRs**

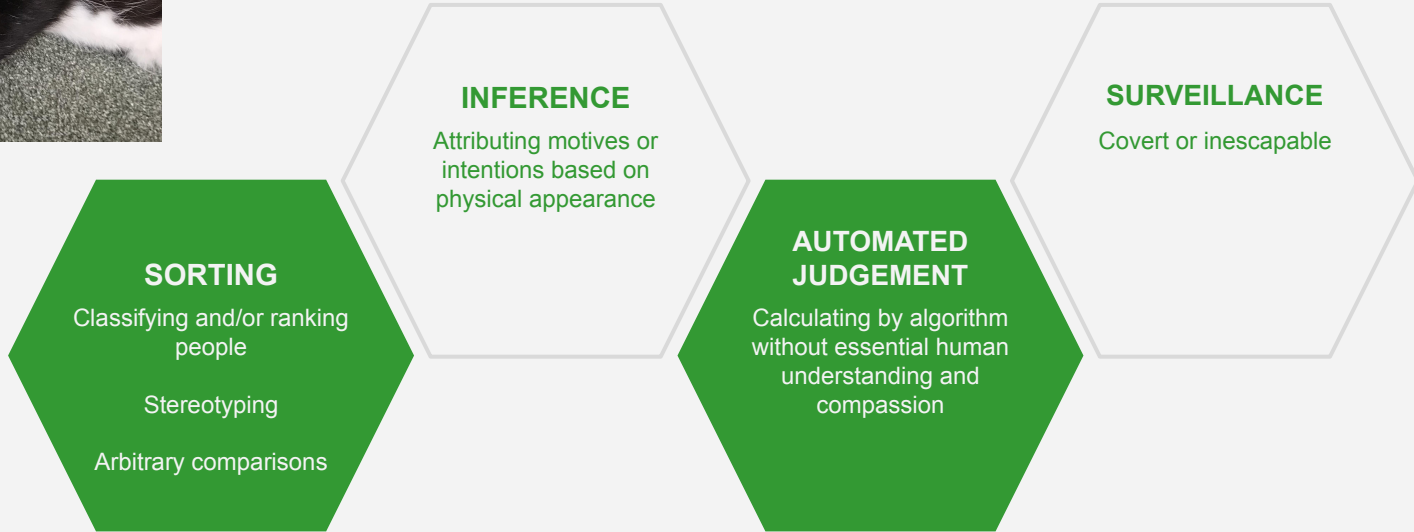
'No evidence' machine learning  
works well in children's social care,  
study finds

**Ikea launches investigation after staff  
find CCTV cameras in toilets**

**Former Post Office worker says she was left  
homeless following false conviction**



## OPERATIONS



# From Inherent Racial Bias to Incorrect Data—The Problems With Current Credit Scoring Models

DWP urged to reveal algorithm that 'targets' disabled for benefit fraud

Discrimination

TikTok curbed reach for people with disabilities

Your Smartphone Apps Are Filled With Trackers You Know Nothing About

Facebook's Ad Algorithm Discriminates Even When It's Not Told To, Study Finds

By Matt Stieb

Data

**As AI Meets the Reputation Economy, We're All Being Silently Judged**

by Sophie Kleber

January 29, 2018



**ASSUME HARMS  
\*WILL\* OCCUR**

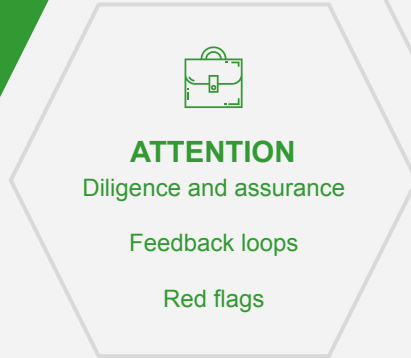
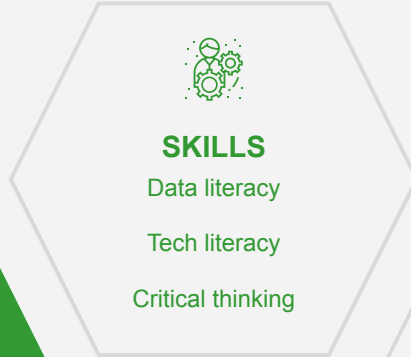
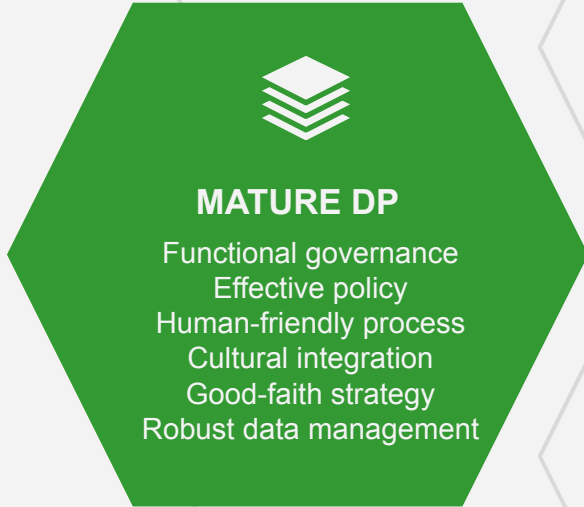


**UNLESS....**

Protective safety measures are:

- in place
- effective
- sustainable
- maintained

# SAFETY MEASURES



## MESH OF PROTECTION



## FORGET 'RISK' SCORING

Impact to data subjects' rights and freedoms  
*cannot* be described by a 5x5 matrix and wishful  
thinking

Enumerate the hazards

Evaluate the safety measures

Build feedback loops

Keep an eye on news and research



# RESOURCES



- <https://datajusticelab.org/data-harm-record/>
- <https://www.theodi.org/article/the-data-ethics-canvas-2021/>
- <https://datahazards.com/contents/data-hazards.html>
- <https://www.urban.org/research/publication/do-no-harm-guide-additional-perspectives-data-equity>
- <https://commons.princeton.edu/invisible-violence/engagement/>



# Thanks

FOR LISTENING!